

LED Macro Light



xade *nano*⁽⁺⁾ 65K100/65K101(c,s)

User Manual

Please read the user manual before the first use and keep it for future reference.

The light source is not replaceable.

Read this manual carefully before using the light and keep it until the final disposal of the light for reference. If something is not understood, ask a professional or the supplier for clarification before use.

You can find the latest version of this manual and current tips at <https://www.xade.tech/nano> and <https://www.xade.tech/nano-plus>.

Foreword

The xade⁽⁺⁾ *nano* LED macro light is designed to illuminate the Ultra Wide lens of the iPhone 14/15 (Type 65K100c with optical element), iPhone 16 / Plus (Typ 65K100s/65K101s) and the Pro & Max versions (Type 65K100/65K101). With the included and separately sold xade *nano card* and the apps xade *finder* and xade *roast*, color measurements can be taken and objects can be examined at up to 15x magnification.

Caution!

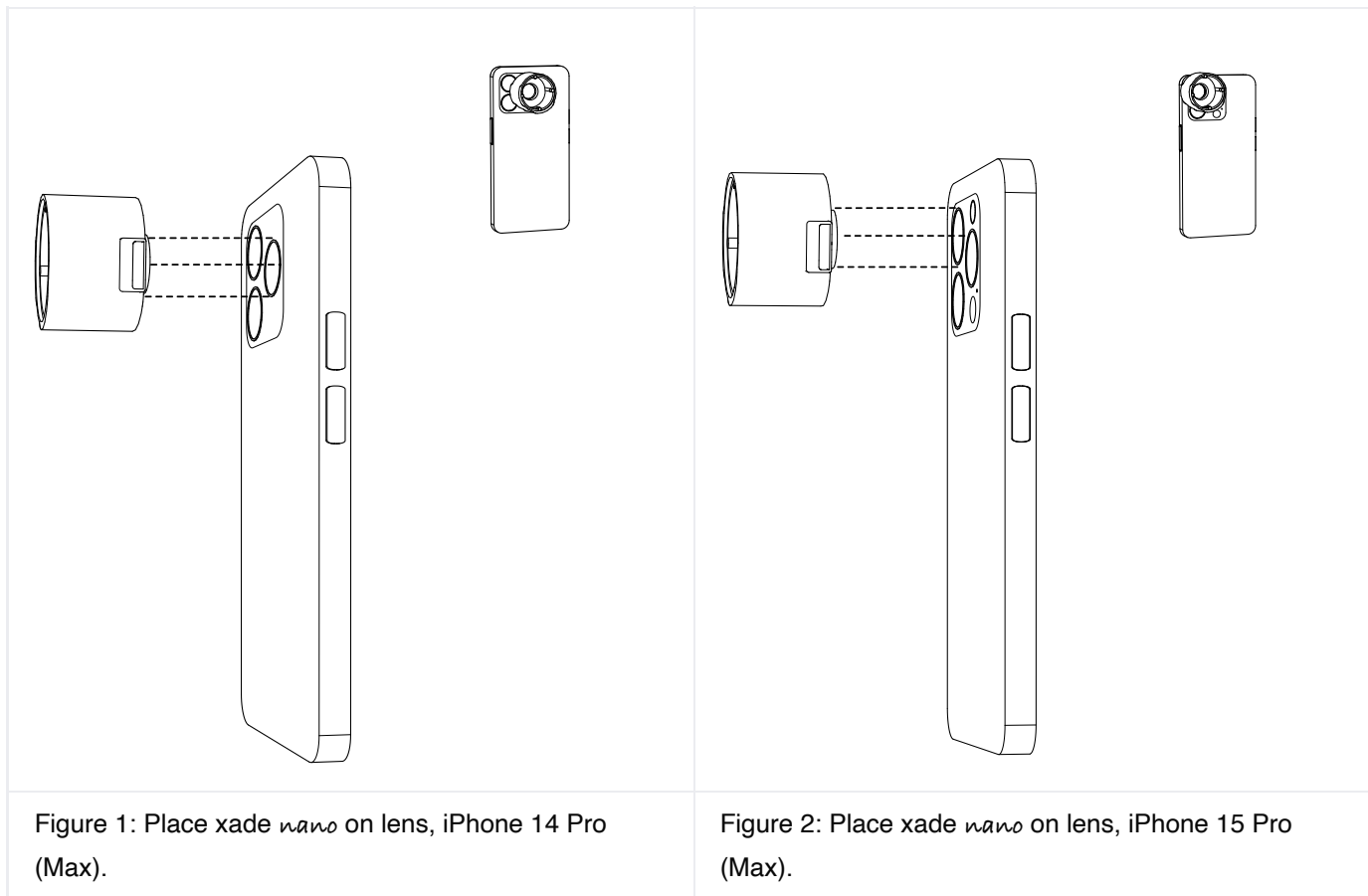
Avoid looking directly into the light source. Keep liquids away. Keep out of reach of children, the light is not a toy.

Package Contents

- xade *nano*⁽⁺⁾
- xade *nano card* (already inserted)
- Connection cable (permanently attached in nano⁺ model)
- Lightning adapter (included when sold for iPhone models with lightning port)

Setup and Usage

xade *nano*



For other iPhone models, the Ultra Wide lens is located at the top left.

Please place xade *nano* on the Ultra Wide lens as shown in Figure 1 for iPhone 14 Pro (Max), or at the top left for other models.

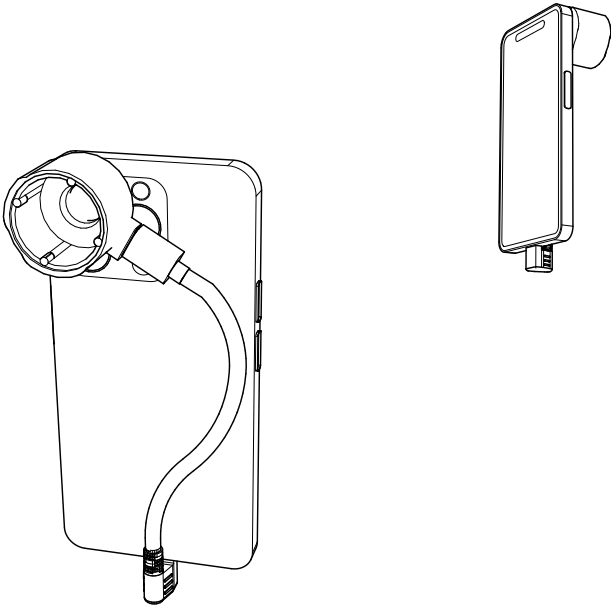


Figure 3: Cable connection.

Connect the cables as shown in Figure 2 and bend the cable for comfortable use, see Figure 3.

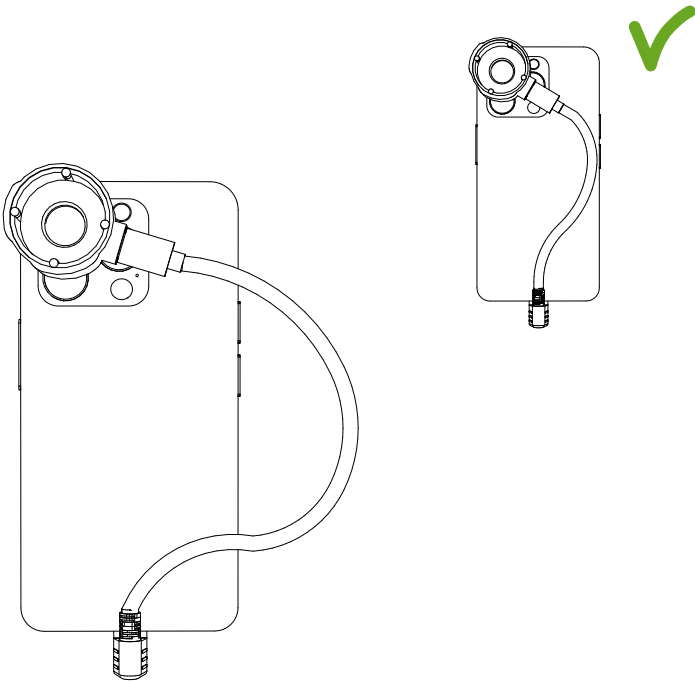


Figure 4: Cable management.

Color Measurement

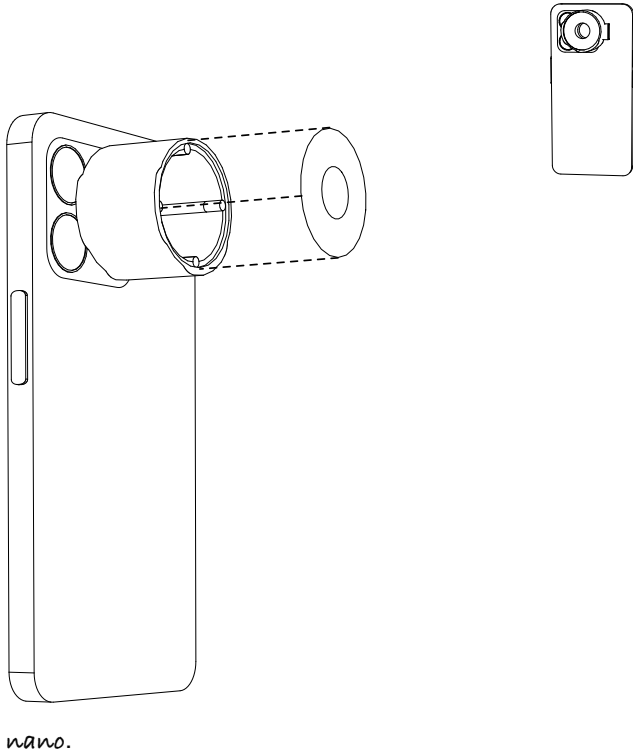


Figure 5: Let xade *nano card* snap magnetically onto xade

nano. For color measurement, let xade *nano card* snap magnetically onto xade *nano* as shown in Figure 4.

The card should be aligned so that the white area with the color ring is facing the Ultra Wide lens.

Press the iPhone flush against the surface to be measured. The circular adjustable measuring area should be centered in the hole of the card, see Figure 5.

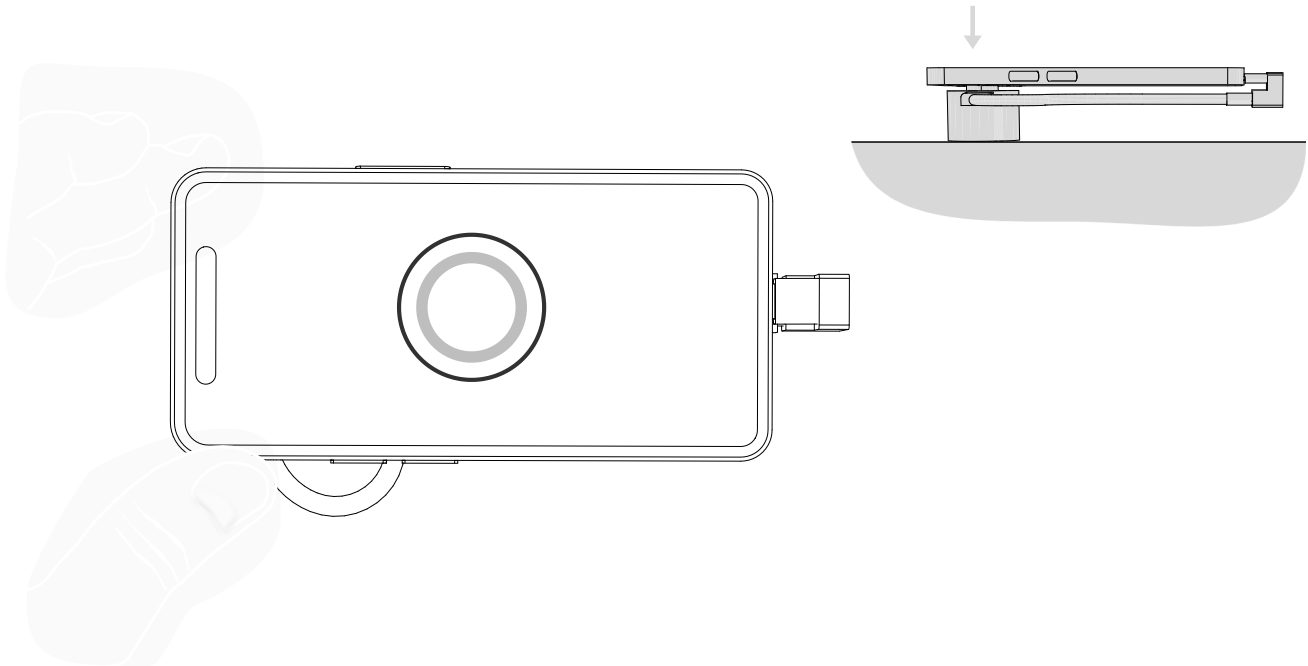


Figure 6: Color Measurement.

Microscope

Remove the card, adjust the magnification level, and examine the enlarged surface.

xade *nano*⁺

To attach xade *nano*⁺, first plug in the cable. Then press xade *nano*⁺ onto the camera bump until it clicks into place.

To remove, reverse the steps: lift from the camera bump first, then unplug the cable.

Color measurement and microscope mode operate as with xade *nano*.

Technical Specifications

- 5V via USB-C
- Power consumption: < 0.5W
- Color temperature: ~6500K
- CRI > 97
- IES TM-30-15 Rf ~ 96 Rg ~ 102
- Illumination geometry: 45°/0°
- Lens stack with polarization filter (for Type 65K100c)

Maintenance and Cleaning

- Keep liquids away.
- Unplug the cable from the smartphone after use.

Repairs

No self-service repairs can be performed. Contact us at info@xade.tech so we can coordinate the next steps.

Disposal

The light must not be disposed of with household waste. Please dispose of the light at your local disposal site for electronic waste. We gladly accept old devices to recycle valuable components. Send your sufficiently stamped package to the address below of eveloar GmbH.



xade is a registered trademark of eveloar GmbH.

iPhone and iOS are registered trademarks of Apple Inc.

eveloar GmbH | Erbprinzenstr. 14 | 79098 Freiburg | info@xade.tech

Document version: 1.0.6